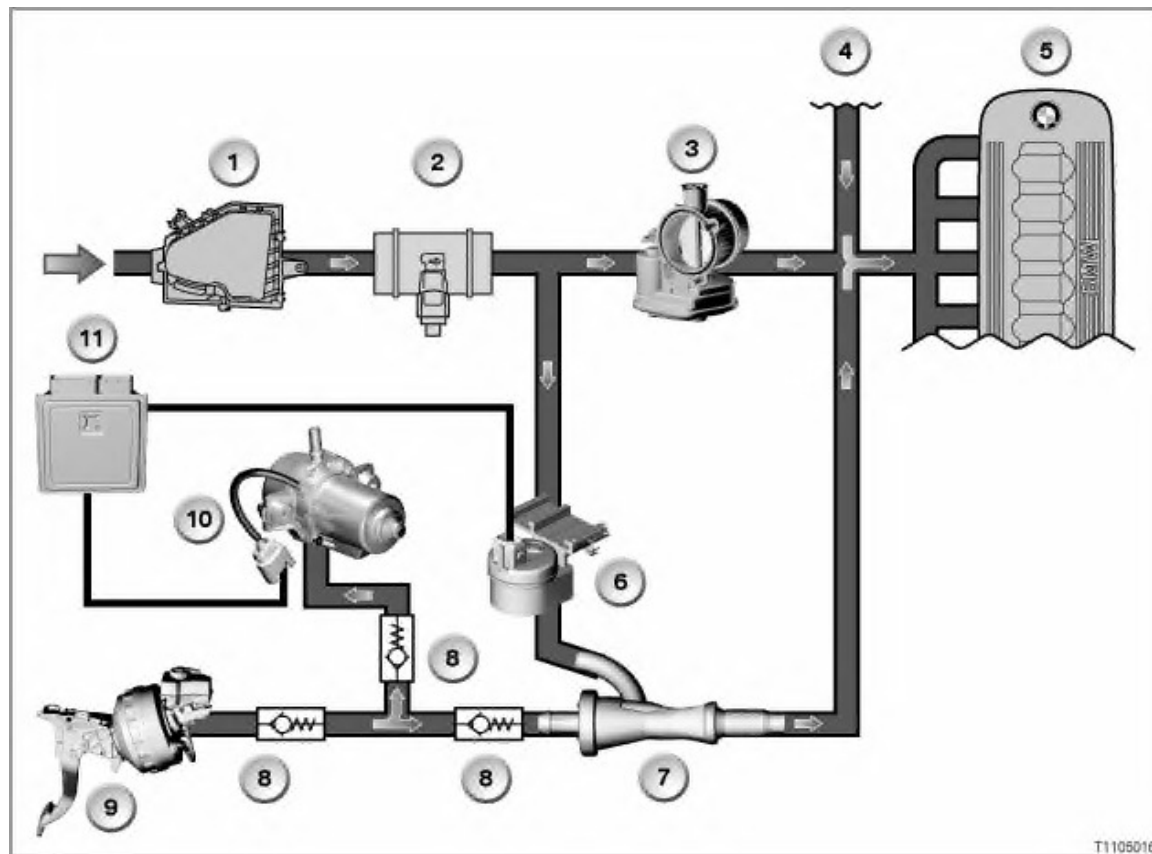


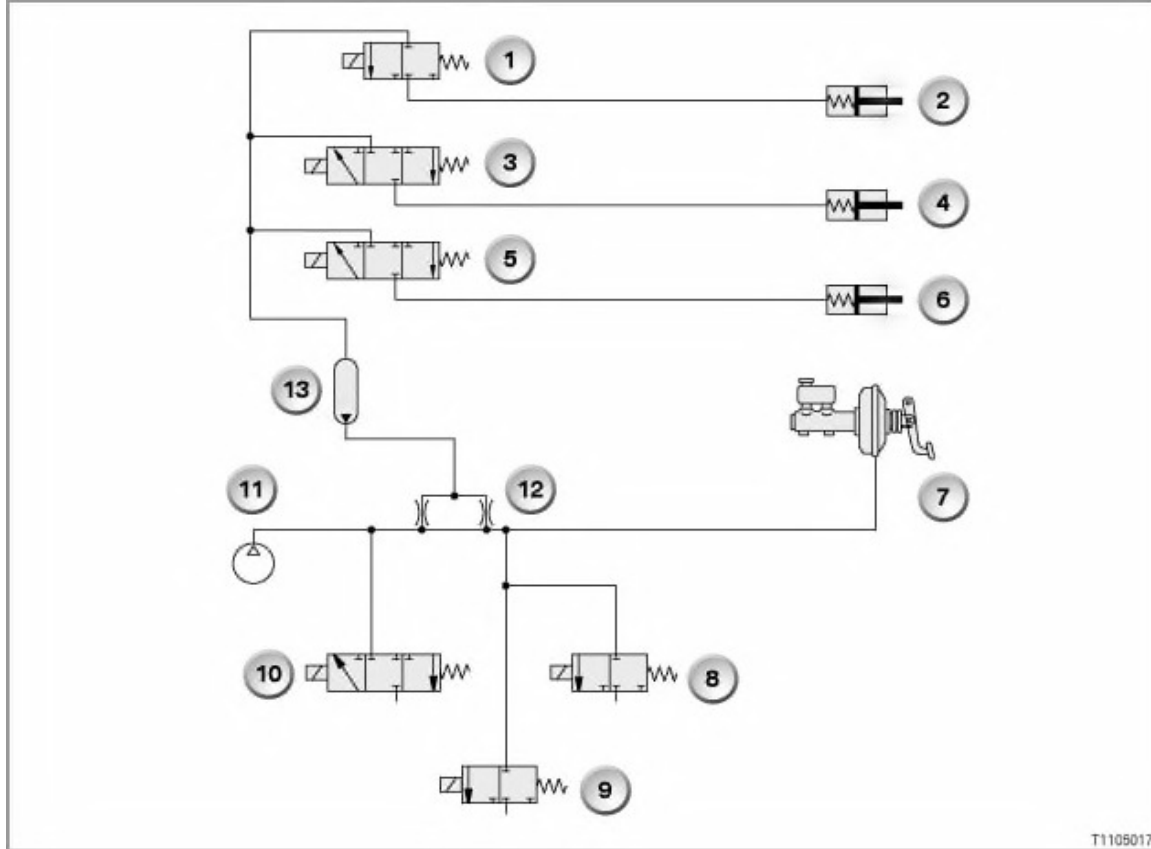
- Function diagram of vacuum supply



The illustration shows a simplified representation of the vacuum supply of the brake booster with suction-jet pump and electric vacuum pump.

Key	Explanation	Key	Explanation
1	Air cleaner	2	Mass air flow sensor
3	Throttle valve	4	Connection to additional components (e.g. electric switching valve)
5	Engine	6	Solenoid valve
7	Suction-jet pump	8	Check valve
9	Brake booster	10	Electric vacuum pump
11	Digital engine electronics (DME)	12	

- Pneumatics diagram



The illustration shows the E60, model 535d.

Key	Explanation	Key	Explanation
1	Electric switching valve for compressor bypass plate	2	Diaphragm can for compressor bypass plate
3	Electropneumatic pressure converter for turbine control valve	4	Diaphragm can for turbine control valve
5	Electropneumatic pressure converter for wastegate valve	6	Diaphragm can for wastegate valve
7	Brake booster	8	Electric switching valve for engine mount switch mechanism
9	Electric switching valve for swirl flap in intake manifold	10	Electropneumatic pressure converter for EGR valve
11	Mechanical vacuum pump	12	Throttle (2 pcs.)
13	Vacuum system reservoir		