

## ZF 5HP30 Automatic Transmission - Spare Parts Catalog



### 5HP30 Transmission Overview (North American Applications)

#### Make / Model / Model Year – BMW (A5S 560Z)

Make	Model	Style	Model Year	From – Up to	Code	OE Part #	ZF Part #
BMW	540i	E34 Sedan (M60)	1992 – 1995	– 04/95	ML	24 00 1 421 349	1055 000 010
			1992 – 1995		PA	24 00 1 422 505	1055 000 029
BMW	540i	E39 Sedan (M60)	1995 – 1997	– 01/97	PK	24 00 1 422 476	1055 000 026
BMW	740i	E32 Sedan	1992 – 1994		ML	24 00 1 421 349	1055 000 010
			1992 – 1994		PA	24 00 1 422 505	1055 000 029
BMW	740i	E38 Sedan (M60)	1994 – 1995		PY	24 00 1 422 509	1055 000 031
BMW	740i	E38 Sedan (M62)	1996 – 1997	– 01/97	PK	24 00 1 422 476	1055 000 026
BMW	740iL	E32 Sedan	1992 – 1994		ML	24 00 1 421 349	1055 000 010
			1992 – 1994		PA	24 00 1 422 505	1055 000 029
BMW	740iL	E38 Sedan (M60)	1994 – 1995		PY	24 00 1 422 509	1055 000 031
BMW	740iL	E38 Sedan (M62)	1996 – 1997	– 01/97	PK	24 00 1 422 476	1055 000 026
BMW	750iL	E38 Sedan	1994 – 1995	– 04/95	OC	24 00 1 421 818	1055 000 017
			1994 – 1998	– 09/98	PZ	24 00 1 422 511	1055 000 032
			1998 – 2001	09/98 –	TK	24 00 1 423 478	1055 000 040
BMW	840Ci	E31 Coupe	1995 – 1996		PK	24 00 1 422 476	1055 000 026
BMW	840i	E31 Coupe	1993 – 1995	– 04/95	MR	24 00 1 421 499	1055 000 011
			1993 – 1995		PL	24 00 1 422 507	1055 000 030
BMW	850Ci	E31 Coupe (M73)	1994 – 1995	– 04/95	OC	24 00 1 421 818	1055 000 017
			1994 – 1997		PZ	24 00 1 422 511	1055 000 032

**Note:** Transmission specification number 1055 000 010 is replaced by 1055 000 029, 1055 000 011 is replaced by 1055 000 030, and 1055 000 017 is replaced by 1055 000 032.

#### Make / Model / Model Year – Aston Martin

Make	Model	Engine	Model Year	OE Part #	ZF Part #
Aston Martin	DB7 Vantage	V12 6.0 liter	1999 –	42-120296-AA	1055 000 039
Aston Martin	DB7 Vantage Volante	V12 6.0 liter	1999 –	42-120296-AA	1055 000 039

#### Make / Model / Model Year – Bentley

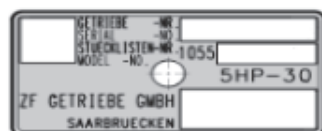
Make	Model	Engine	Model Year	OE Part #	ZF Part #
Bentley	Arnage	V8 6.8 liter	1999 –	PL20318PA	1055 000 028

#### Make / Model / Model Year – Rolls Royce

Make	Model	Engine	Model Year	OE Part #	ZF Part #
Rolls Royce	Silver Seraph	V12 5.4 liter	1998 –	PL20365PA	1055 000 027

**Note:** This spare parts catalog includes only transmission specification numbers for North American applications. For all other 5HP30 transmission specification numbers, please contact your preferred ZF passenger car transmission distributor for more information about available spare parts and kits.

**Type Plate:** Located on the main housing of transmission. Please refer to ZF transmission specification # when searching for spare parts and kits in this catalog (last three digits).



- ← Transmission Serial #
- ← ZF Transmission Specification #
- ← Vehicle Manufacturer Transmission #



## 5HP30 Technical Information

### Torque, Gear Ratio & Weight

Input Torque	1 <sup>st</sup> Gear	2 <sup>nd</sup> Gear	3 <sup>rd</sup> Gear	4 <sup>th</sup> Gear	5 <sup>th</sup> Gear	Rev Gear	Weight (approximate)	Oil Capacity (approximate)
560 Nm	3.55	2.24	1.54	1.00	0.79	3.68	~109 kg (240 lbs.)	~13.5 liter (14.3 quart)

### Transmission Oil Reference Guide

Make	Oil Grade	Type Plate (color)	ZF Part #	OE Part #
BMW	SHELL LA 2634	Black	1055 000 010	24 00 1 421 349
			1055 000 011	24 00 1 421 499
			1055 000 029	24 00 1 421 349
			1055 000 030	24 00 1 422 507
	ESSO LT 71141	Green	1055 000 017	24 00 1 421 818
			1055 000 026	24 00 1 422 476
			1055 000 031	24 00 1 422 509
			1055 000 032	24 00 1 422 511
			1055 000 040	24 00 1 423 478
			1055 000 039	42120296AA
Aston Martin	ESSO LT 71141	Green	1055 000 039	42120296AA
Bentley	ESSO LT 71141	Green	1055 000 028	PL20318PA
Rolls Royce	ESSO LT 71141	Green	1055 000 027	PL20365PA

### 5HP30 Lubrications

Amount	ZF Part #	Description	Where used (1055 000 ___)	Notes
20 Liter	0671 090 148	Oil SHELL LA 2634 (Canister)	010/011/029/030	
209 Liter	0671 090 149	Oil SHELL LA 2634 (Drum)	010/011/029/030	
20 Liter	0671 090 166	Oil ESSO LT 71141 (Canister)	017/026/027/028/031/ 032/039/040	
205 Liter	0671 090 169	Oil ESSO LT 71141 (Drum)	017/026/027/028/031/ 032/039/040	

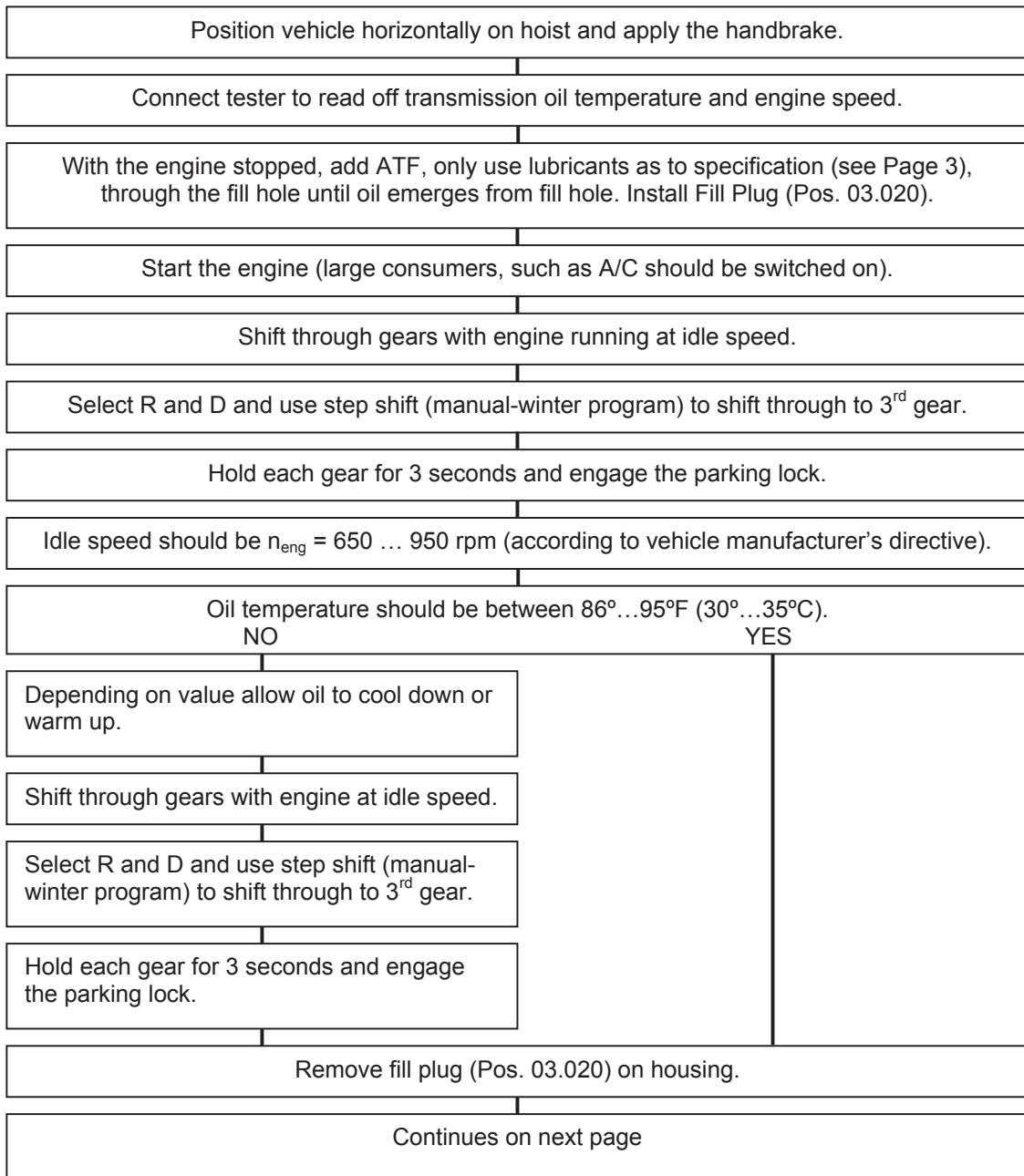
### 5HP30 Technical Literature

Language	ZF Part #	Description	Where used (1055 000 ___)	Notes
English	5HP30FD	5HP30 Functional Description	All	
English	5HP30REP	5HP30 Repair Manual	010/011/017/026/029/ 030/031/032/040	
Eng/Ger	1055 764 701	5HP30 Wall Chart	All	
English	5HPVBMAN	5-Speed Valve Body Manual	All	



## 5HP30 Technical Information (continued)

### 5HP30 General Transmission Oil Filling Procedure





## 5HP30 Technical Information (continued)

### 5HP30 General Transmission Oil Filling Procedure (continued)

